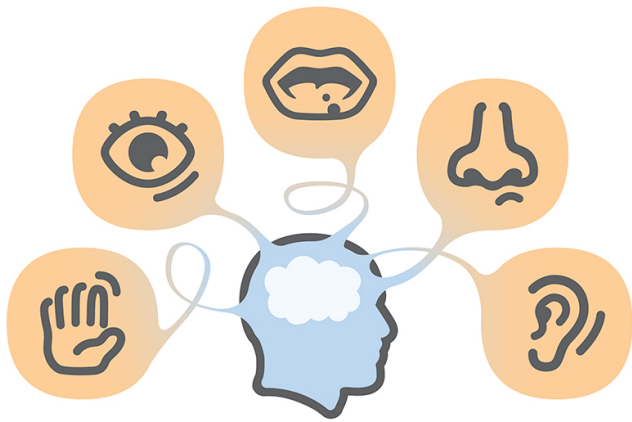


Leading the Way: Enhancing Utah's Workforce with Neurodiversity

UNWP is improving the higher education experience and post-graduation employment success for neurodiverse individuals

Strengths and Challenges of Students with Autism or Similar Learning Styles



Students may have strengths in these areas...

- intelligent
- passionate about area of interest
- pursue areas of interest with enthusiasm
- appear as "experts" in their area of interest
- think outside the box to solving problems
- good visual and spatial learners
- excellent memories
- strong attention to details and accuracy
- reliable; once expectations are established
- rule and routine oriented
- honest and loyal

Student may not disclose, but may have difficulties in these areas...

Social Communication

- maintaining eye contact
- monopolizing conversations or staying on topic
- navigating social situations & group work
- understanding sarcasm & abstract language



Executive Functioning

- asking for help
- initiating appointments or homework
- following through on assignments & other tasks
- time management
- planning out course schedules
- multi-tasking



Sensory Behavioral

- high anxiety
- ritualistic & repetitive behaviors
- adjusting to change
- appear preoccupied with certain subjects/
narrow focus
- heightened sensitivity to sensory input

